

Lake Edge Scarf



Finished Measurements

56 inches (140 cm) across the top of scarf by 30 inches (76 cm) from top to bottom point.

Yarn

430 yds Fingering weight

Needle

US 6 (4 mm)

Chart A

Row 1: K 1, ktbl, YO, k2tog, K to last 2 sts, YO, K 2.

Row 2, 4, 6, 8: Purl to last st, K 1.

Row 3: K 1, ktbl, YO, K 1, YO, k2tog, K to last 2 sts, YO K 2.

Row 5: K 1, ktbl, YO, K 3, YO, k2tog, K to last 2 sts, YO, K 2.

Row 7: K 1, ktbl, YO, k2tog, YO, K 1, YO, SSK, YO, k2tog, K to last 2 sts, YO, K 2.

Chart B

Row 1: K 1, ktbl, YO, k2tog, YO, K 3, YO, SSK, YO, k2tog, K to last 2 sts, YO, K 2.

Row 2, 4, 6, 8, 10, 12: Purl to last st, K 1.

Row 3: K 1, ktbl, YO, k2tog, YO, K 5, YO, SSK, YO, k2tog, K to last 2 sts, YO, K 2.

Row 5: K 1, ktbl, YO, k2tog, YO, K 7, YO, SSK, YO, k2tog, K to last 2 sts, YO, K 2.

Row 7: SSK, K 1, YO, SSK, YO, k2tog, K 3, SSK, YO, k2tog, YO, K to last 2 sts, YO, K 2.

Row 9: SSK, K 1, YO, SSK, YO, k2tog, K 1, SSK, YO, k2tog, YO, K to last 2 sts, YO, K 2.

Row 11: SSK, K 1, YO, SSK, YO, SL2tog, K1, P2SSO, YO, k2tog, YO, K to last 2 sts, YO, K 2.

Scarf

CO 3 sts.

Purl 1 row.

K 1, YO, K 2.

Purl 1 row.

K to last 2 sts, YO, K 2.

Repeat last 2 rows until 10 sts.

Purl 1 row.

Next rows work Chart A.

Next rows work Chart B, Cont repeating Chart B until 3 yds of yarn is left. Bind off loosely in patt.

Finishing

Weave in loose ends. Block to finished measurements.

Abbreviation

K - Knit P - Purl

St(s) - Stitch(s)

YO - Yarn over

Ktbl - knit through the back loop

K2tog - Knit 2 sts together

SSK - Slip next st as if to knit, slip a sec st as if to knit, with left hand needle slid point of needle into front of two sts that were slipped, wrap yarn around back needle, pull through.

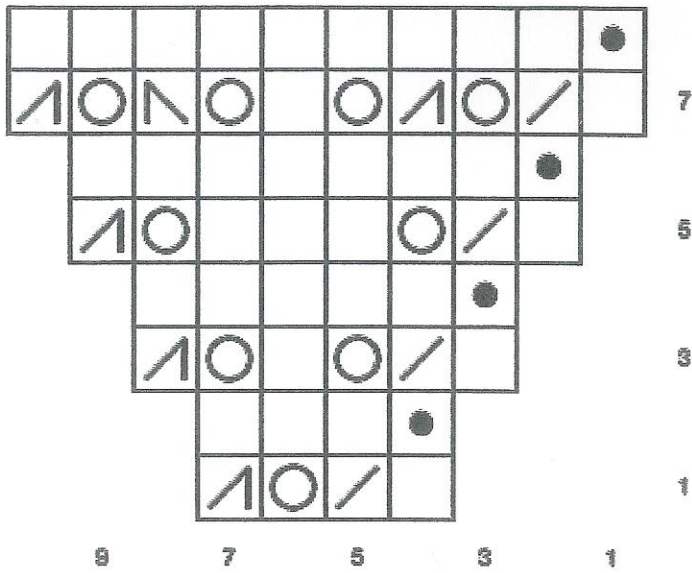
M - Marker

PM - Place marker

SL2tog, K1, P2SSO - Slip two sts at the same time as if to knit, knit 1 sts, pass the two slipped sts over the knit st, as if binding off.

Patt - work in pattern stitch

Chart A



Symbol Key

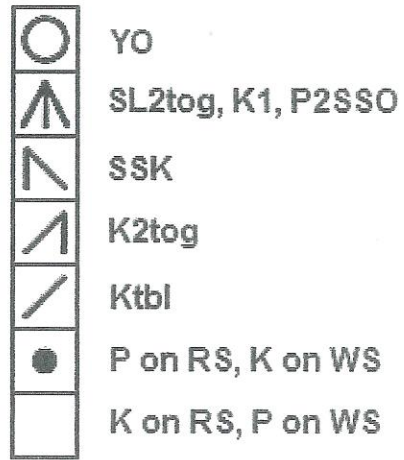


Chart B

